










FIRE DETECTION KEY

-  SD Optical Smoke detector to BS EN 14604:2005
-  Optical smoke detector with c/w sounder base and led strobe light to BS EN 14604:2005
-  HD Heat detector to BS EN 14604:2005
-  CMD Carbon Monoxide detector to BS EN 14604:2005
(All detectors to be interlinked)
-  CMA Manual call point in accordance with EN54-11
-  FAP Fire alarm system control panel - L2 system
-  ES recessed emergency spotlight / Dual fitting
-  E Emergency light with 1 hour battery back up
-  EXIT Emergency exit light with 1 hour battery back up



Fire Warning System to comply with British Standard 5839: Part 1 : 2019

Every part of an escape route to have artificial lighting supplied by a protected circuit that provides a level of illumination not less than that recommended in BS 5266 Part 1:2005 (Maintained -2 hour duration) and BS EN 1838: 1999 (OR BS 5266-7: 1999)
Firefighting Equipment to comply with British Standard EN3, British Standard 7863 : 1996, British Standard 5306-8:200

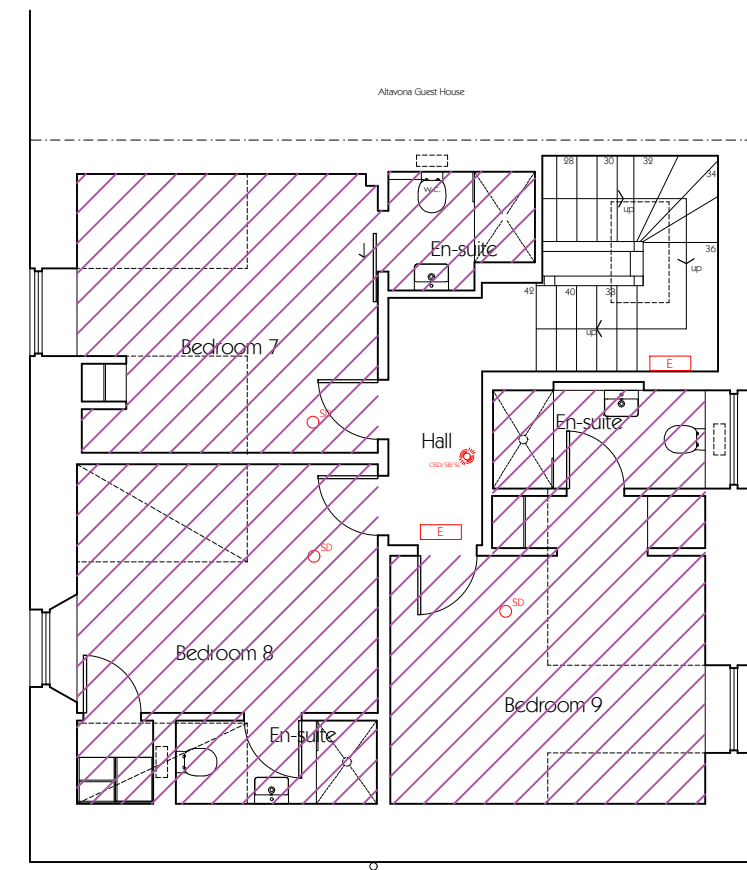
Signs and Notices to comply with the Health and Safety (Safety Signs and Signals) Regulations 1996 and/or British Standard 5499: Part 1 : 1990.

The applicant must ensure that the upholstered furniture satisfies the Cigarette and Match Ignitability Test specified in British Standard 5852: 1990 (1998). (NOTE - for existing furnishings only)

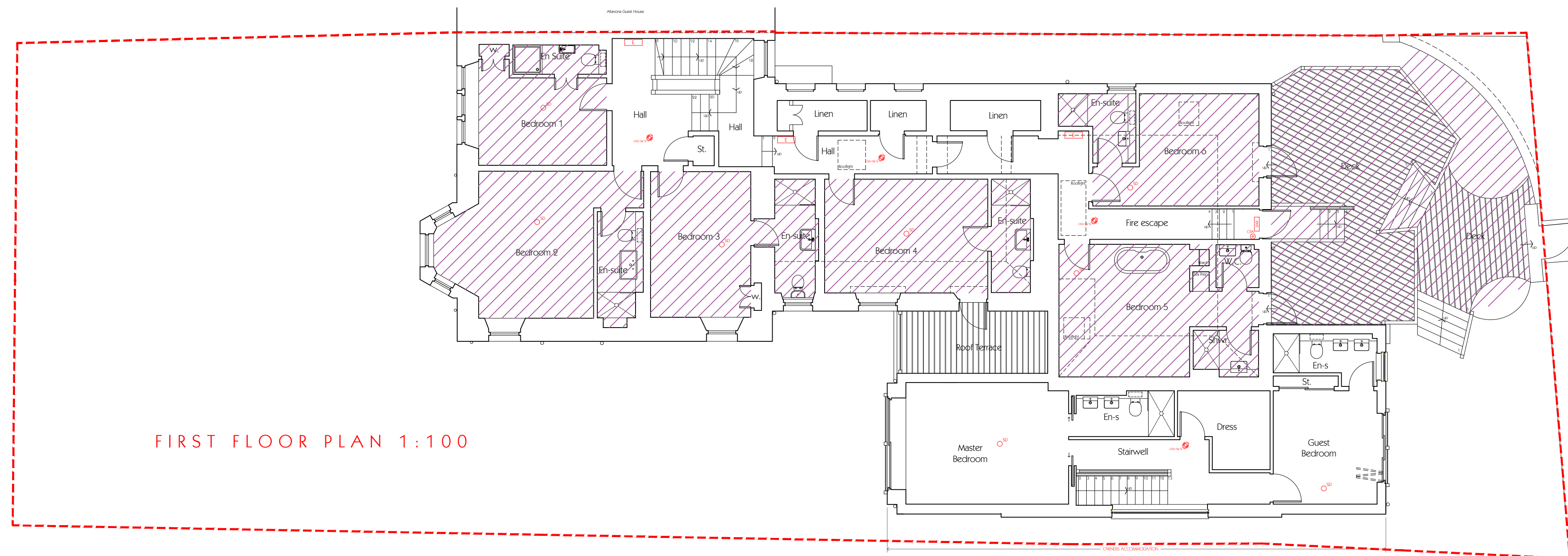
A Certificate of Compliance to the aforementioned British Standards should be issued by a competent person and forwarded to the Fire Authority prior to, or on the date of the final inspection of the premises

-  Extent of property
-  Extent of Customer Area

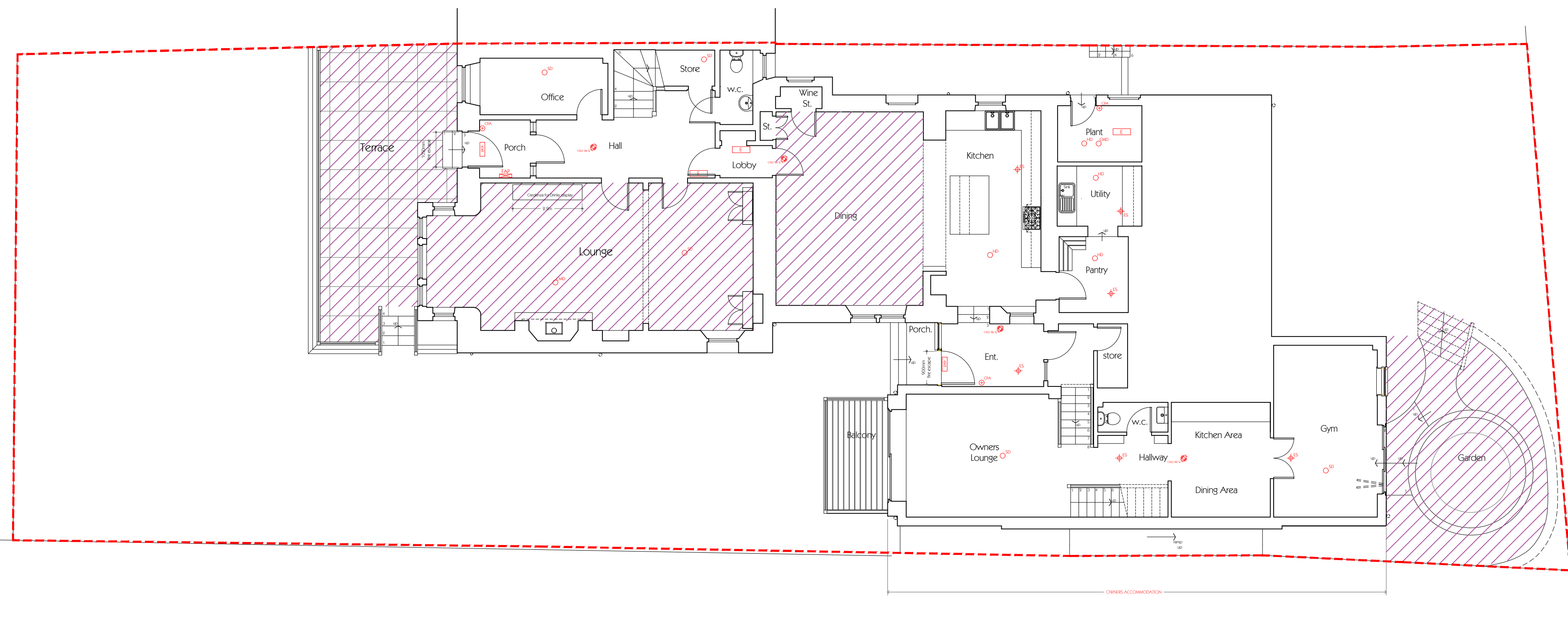
Note: Drawing prepared for application for Licensing Board only.



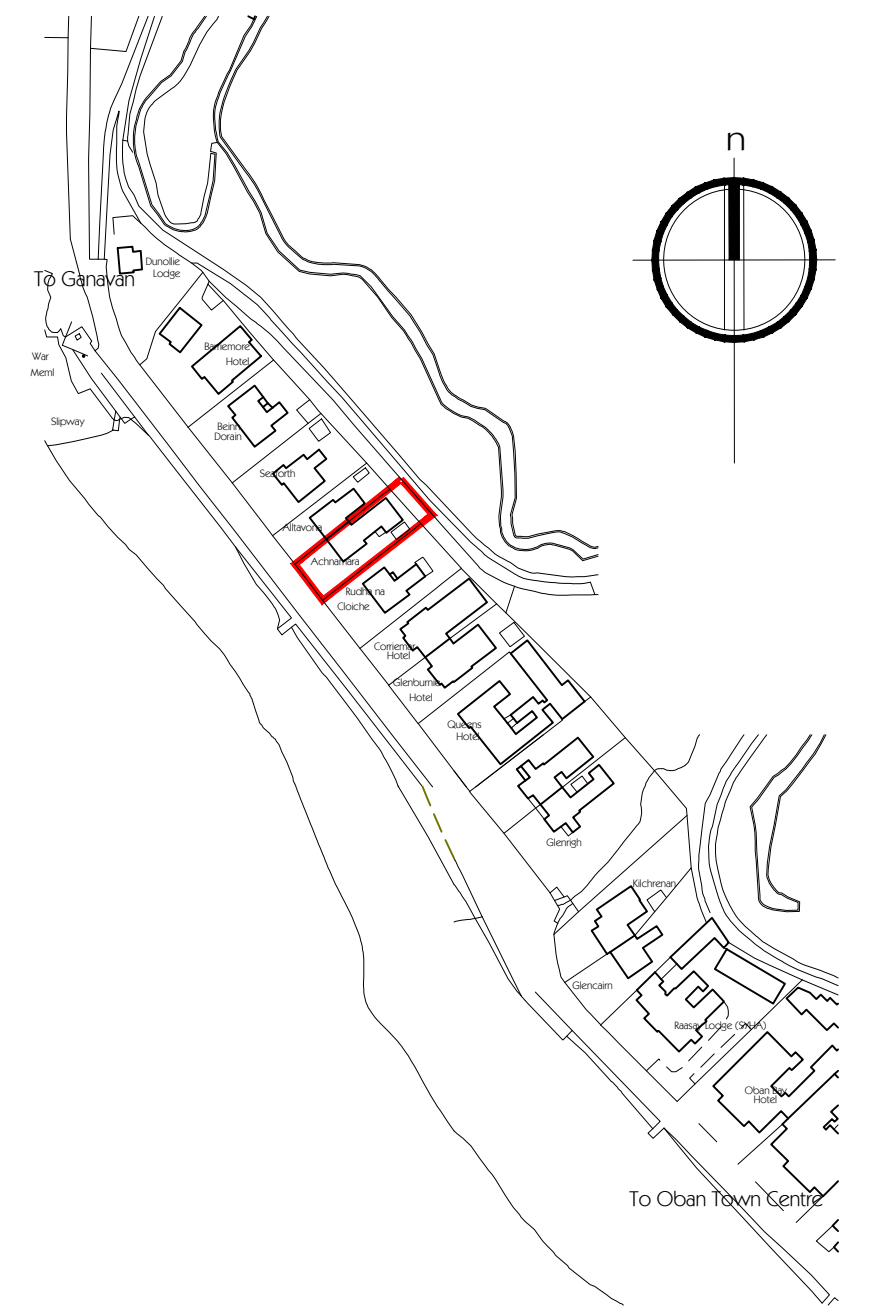
SECOND FLOOR PLAN 1:100



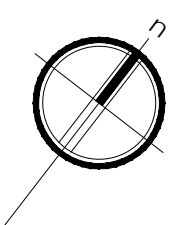
FIRST FLOOR PLAN 1:100



GROUND FLOOR PLAN 1:100



LOCATION PLAN 1:2500



Revision A: Amended in accordance with Clients comments 24.07.20

Client
PAUL SLOAN

Project
**NO. 26 BY THE SEA,
CORRAN ESPLANADE, OBAN,
ARGYLL, PA34 5AQ**

Drawing
FLOOR PLANS

LICENSING DRAWING

Drawn by CMD Date: JUNE 2020
Drawing Scale: A1 @ 1:100
CAD Filename:

Beaton + McMurphy
architects
tigh na glaic, tayruilt, argyll. pa35 1jw
tel - 01866 892350 fax - 01866 892320 e-mail mail@bmcarchitects.co.uk

Drawing No. **1975** | Revision **LD 01** | **A**

